

World Stamp Show

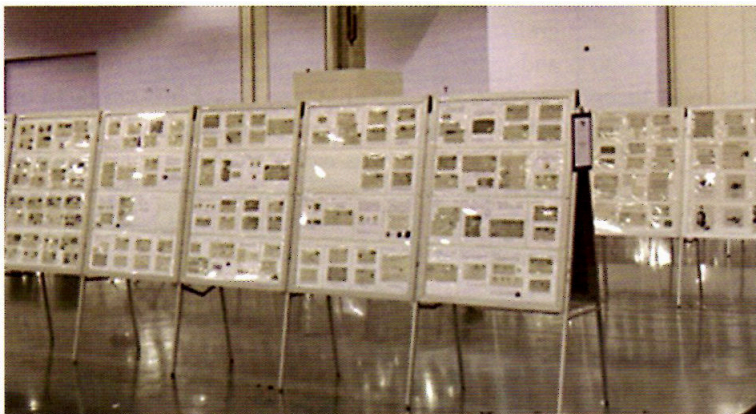


## Framing World Stamp Show NY2016

We are a little less than three years away from the next United States International Exhibition. The Javits Center in New York City will house the eight-day extravaganza, replete with 204 dealer booths, 60 participating Societies/Affiliates and over 50 foreign postal administrations, anchored by our own United States Postal Service.

Oh, did I mention, there will be 4,000 frames of exhibits? While the booths will be fabricated by the exhibition decorator we choose, the frames will not. We will have 2,000 A-frames manufactured for the exhibition (two exhibit sides per A-frame). The current planning is to use the Ameripex style frame as a prototype, illustrated below. This overall design has withstood the test of time and done so admirably.

However, since we are starting from scratch with this project, I ask all



readers who have assembled/disassembled these frames or put up exhibits in these frames to please share their thoughts on how to improve upon the original. We already know we will not have bottom screws in the frames and we are looking to improve the strips that hold the pages horizontally. Please send your comments to K. David Steidley, Secretary, at [steadley@nac.net](mailto:steadley@nac.net).