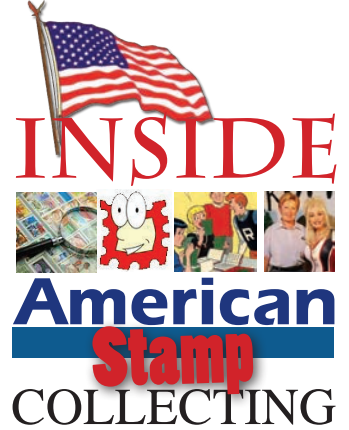




# Exhibition Awards are one of the key focal points of America's next great international show in NYC!



Gene Fricks  
World Stamp Show-NY 2016 Awards Chair

**S**tamp exhibitions have always been staged with a couple of objectives in mind. Collectors like to educate the public and other collectors about the hobby and their particular interest areas. Exhibitions present an opportunity for philatelic fellowship. Exhibitions also appeal to those with a competitive nature, for bragging rights. When you deal with stamp collecting on the world stage, those bragging rights can become a big deal.

Exhibiting got its start from the examples set by the great art salons and world's fairs from the 19th century. Many of us have all read, no doubt, about the great art competitions in the 1860s when the Impressionist movement became the center of attention, or the Armory show in New York in 1913 where Modern art occupied public attention (and controversy). Just as these events had medals and awards, stamp exhibitions use similar forms of recognition for outstanding accomplishment and breakthrough achievement.

Awards for world class philatelic exhibitions follow generally the framework established by the International Federation of Philately (FIP) headquartered in Switzerland. There will be a Grand Prix d'Honneur (GPH), a Grand Prix International, and a Grand Prix National. The GPH is awarded to the most outstanding exhibit in the championship class, those exhibits that have previously garnered a large gold award in international competition.

The Grand Prix National will recognize the most outstanding exhibit of the philately of the host nation and the International will recognize the most outstanding from the rest of philately. In decades past these awards have included classical bronze sculptures, Native American sculptures, and other remarkable objects.

The exhibition jury will award medals of various levels to deserving exhibits in the various classes other than the championship class. These start at the bottom of the ladder with bronze medals and top out with large golds. The jury uses a point system, established by the FIP by mutual agreement, to determine which award goes to which exhibit. The medal design for the 2016 exhibition is under development and should be unveiled by about summer 2015.

In addition, the show committee makes available to the jury special prizes to recognize particular outstand-



Both the location and the awards at America's international stamp shows have always been distinctive. Above, NY's Grand Central Palace, home of 1947's CIPEX and the bronze statue of the Indian Chief, the show's Grand Award.

ing achievements. FIP rules establish that these special prizes be 'objets d'art' and of more than incidental value. For World Stamp Show-NY 2016, the show committee has been soliciting contributions from collectors to provide the special prizes.

Contributors include former exhibitors, philatelic federations and societies, and individuals from the philatelic community with an interest in fostering the growth and development of the hobby. Anyone can become a contributor and each prize sponsor will be recognized in the exhibition program with a listing and a photograph of the prize.

To comply with FIP rules, we have been aiming for objects in the \$200-400 value range. Contributors can propose to pick an object themselves or can make a contribution to the prize fund. The committee is making an effort to have the prizes show some New York connection or influence, however broadly defined.

If you are interested in becoming one of these promoters of the hobby, please contact me at [gene.fricks@ny2016.org](mailto:gene.fricks@ny2016.org).