



**Newsletter 11**  
**February 28, 2016**  
May 28-June 4, 2016  
Javits Center



Copyright 2016, New York Philatelic Exhibition, Inc.

World Stamp Show-NY 2016, 22 East 35th St, New York, NY 10016 USA

[info@ny2016.org](mailto:info@ny2016.org)

<http://www.ny2016.org>

## Exactly Three Months Away!

Time flies when you are having a good time. And we are! The show is under 90 days away and every day more exciting validations occur of how great this show is going to be. World Stamp Show-NY 2016 will have something for every collector and in most cases, way more material than you can consume.

Around 4,500 frames of exhibits (4,100 competitive) will showcase the exhibition, with a Court of Honor featuring the world's most expensive stamp, the One Cent Magenta of British Guiana, plus hundreds more rarities, some never before publically exhibited.

Lectures and seminars will take place in abundance – we have 16 rooms each day for all eight days of the show. “Walk Around the World” is the area where all postal administration booths will be located, headed by the U.S. Postal Service. Pick up your free passport (furnished by Linn's/Scott Publishing) and fill it with stamps from countries around the globe. Some 63 Philatelic Society booths will be staffed throughout the show by members of 70 different societies for you to meet! Many have scheduled their annual meeting during the show. And check our web site for the updated listing of 200 or so dealers we're expecting.

Rooms at greatly discounted rates are still available through our partner Experient, and Delta Airlines continues to offer reduced fares. Use the links on our home page to take advantage of these offers.



*Wade*



Wade Saadi [wade.saadi@ny2016.org](mailto:wade.saadi@ny2016.org)  
President, WSS-NY 2016

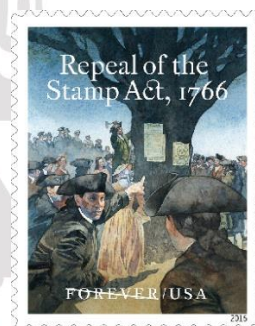
***See our special hotel  
announcement on page 3!***

## Opening/First Day Ceremonies

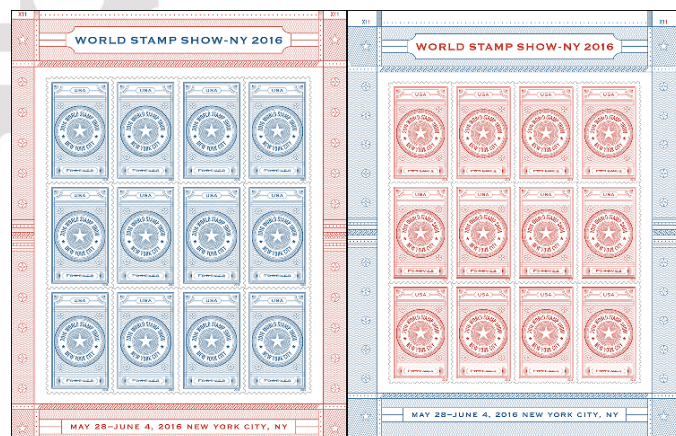
Everyone has been anticipating the announcement about special ceremonies taking place at WSS-NY 2016. Here's what we have so far...

The official Opening Ceremony for World Stamp Show-NY 2016 happens at 9:15 on Saturday, May 28. The formal welcome is not to be missed! Doors to the show open at 10:30 that day.

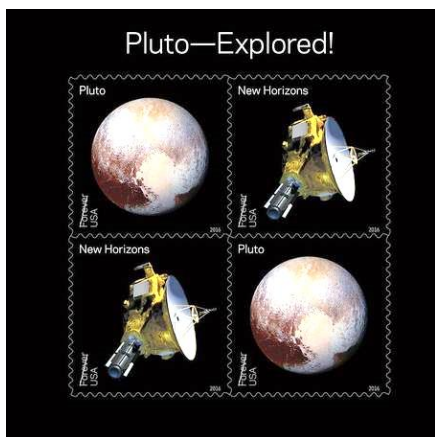
U.S. Postal Service first day ceremonies take place at 11 AM every day of the show (except Tuesday when a special stamp unveiling is planned) in Rooms 1E12-14 at the Javits Center. Four of the seven issues are seen here. Specifics about which will be released on what day are pending, as are the remaining stamp and/or stationery issues. Stay tuned!



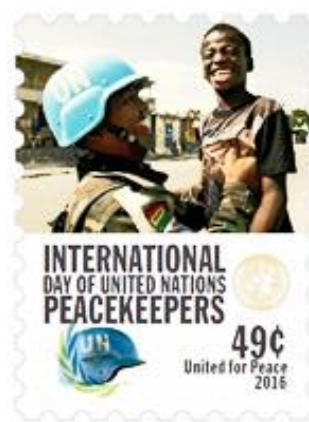
Repeal of the Stamp Act, 1766



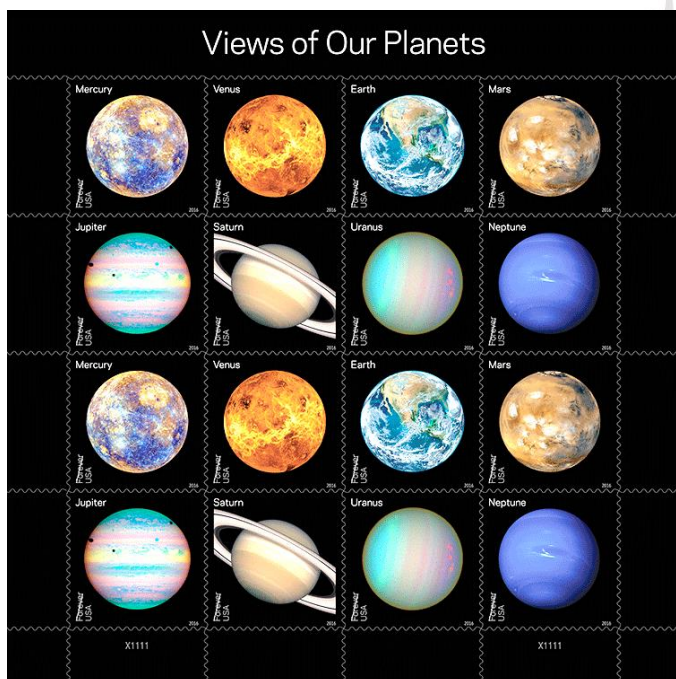
World Stamp Show-NY 2016 sheet pair



Pluto Explored souvenir sheet



(preliminary design before 47¢ rate change)



Views of Our Planets sheetlet

**UN STAMPS**

UNPA first day ceremonies:  
**Saturday, 28 May 2016** (UN Peacekeepers) and  
**Monday, 30 May 2016** (WSS/UNPA New York  
 office 65th Anniversary special event sheet)

**WORLD STAMP SHOW  
 NEW YORK CITY 2016  
 BOOTH # CC329**

UN Postal Administration  
 P.O. Box 5900, Grand Central Station,  
 New York, NY 10163-5900, USA  
 Tel: 1-800-234-8672, Fax 1-917-367-1400

Email: [unpanyinquiries@un.org](mailto:unpanyinquiries@un.org)  
 Website: <https://unstamps.org>

The United Nations Postal Administration has planned two stamp release ceremonies. Both will take place at 1 PM, also in Rooms 1E12-14.

Saturday, May 28 is the launch date of a set of six stamps featuring UN Peacekeepers. The series will contain denominations of US\$0.49 (now possibly \$0.47), US\$1.20, CHF 1,00, CHF 1,50, Euro 0,68 and Euro 0,80, each in a sheet format of 20 stamps.

The ceremony features a gathering of UN dignitaries and alumni who have served as peacekeepers from around the world. It will be a stirring event not to be missed.

On Monday, May 30, a special event sheet to commemorate WSS and UNPA's 65th Anniversary will be available, personalized with your photo on each label. A special photo booth will be on-site through the remainder of the show producing these. The design of the sheet is not yet available.

Additional first day ceremonies are anticipated and will be announced when known.



## Hotel Availability Update

**Our special discount rates will end a couple of weeks before the show. All hotels were selected based on proximity to the Javits Center or nearby bus/subway transportation. Please check out the hotel maps at the end of this newsletter to check out prices and locations. We do not want you to be disappointed -- be sure to take advantage of these discount rates while they are still available.**

Have you made your discounted hotel room reservations yet through our partner Experient? Just go online directly to our easy to use special reservations page at <https://registration.experientevent.com/ShowWSS161/> to see the discounts arranged for show goers.

Prices range from \$99 to \$349 per night plus tax. Only a few rooms at the main show hotel, the New York Marriott Marquis in Times Square, remain available at \$277 nightly.

While most of the rooms in the higher priced brackets are filled, bargain rooms remain, especially those in New Jersey ranging from \$99 to \$189. All are on the bus or rail line and between a 20 and 45 minute ride away from the Javits Center. Learn about transportation details at these links:

<http://www.nycgo.com/articles/nyc-transportation-getting-around> and [http://www.njtransit.com/sf/sf\\_servlet.srv?hdnPageAction=BusTo](http://www.njtransit.com/sf/sf_servlet.srv?hdnPageAction=BusTo).

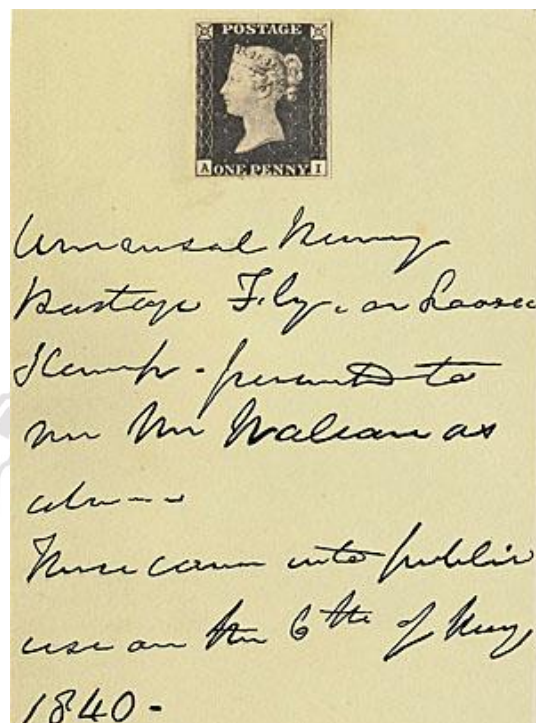
## Daily Themes Finalized

The show's theme days are now finalized and will be commemorated with special cancels and cachets as follows:

- Saturday, May 28 – The World of Stamps Day
- Sunday, May 29 – Learning Never Ends Day
- Monday, May 30 – Armed Forces Day
- Tuesday, May 31 – Science Meets Stamps Day
- Wednesday, June 1 – U.S. Stamp Day
- Thursday, June 2 – Beautiful Americas Day and United Nations Day
- Friday, June 3 – Children of the World Day
- Saturday, June 4 – Topical Collecting Day

## Gems on Display Update

Attendees to WSS-NY 2016 can expect to see one of the most impressive collections of philatelic items ever assembled among the show's Court of Honor and Invited exhibits. Here's another example of a truly unique item.



The world's first postage stamp-literally! Robert Wallace, a postal reform advocate, prepared an archive of items dealing with Great Britain's penny postage program of 1840, including this one.

Inscribed above, "Universal Penny Postage Fly or Loose Stamp presented to me Mr. Wallace as above. These come into public use on the 6<sup>th</sup> of May 1840." Wallace was referencing another note on the document stating, "1<sup>st</sup> Proof of Penny Postage Stamp Cover, presented to Mr. Wallace by the Right Honable. The Chancellor of the Exchequer, Francis Thornhill Baring, April 10<sup>th</sup>, 1840."

The stamp, position AI, came from the penny black's first printed sheet on plate 1a produced just 2 days earlier on April 8. Even more amazing it came with a proof of the Mulready stereotype, state 1, before the top and side panels as well as the denomination descriptions were added.

*From the collection of Alan Hobyake.*

## Society Participation

The response from philatelic organizations wanting to take part in WSS-NY 2016 hosting tables and/or making presentations has been nothing less than spectacular. It's still not too late to meet at the show. Contact Rod Juell at [rodnejuell@ny2016.org](mailto:rodnejuell@ny2016.org) for details. Here's the list as of late-February:

- AICO (International Association of Olympic Collectors)
- Allied Military Government Collector's Club
- American Air Mail Society
- American Associations of Philatelic Exhibitors
- American First Day Cover Society
- American Helvetia Philatelic Society
- American Philatelic Congress
- American Philatelic Research Library
- American Philatelic Society
- American Revenue Association
- American Topical Association
- Armenian Philatelic Association
- Association International des Experts Philateliques
- Auxiliary Markings Club
- Bechuanaland and Botswana Society
- Bermuda Collectors Club
- Biology Unit
- Boston 2026 World Stamp Show
- British Caribbean Philatelic Study Group
- British North America Philatelic Society
- British Postal Museum and Archive
- British West Indies Study Circle
- Burma (Myanmar) Philatelic Study Circle
- Canal Zone Study Group
- Carriers and Locals Society
- CartoPhilatelic Society
- Cats on Stamps Study Unit
- Chess on Stamps Study Unit
- China Stamp Society
- Christmas Philatelic Club
- Christmas Seal and Charity Stamp Society
- Cinderella Stamp Club of Great Britain
- Collectors Club
- Colombia-Panama Philatelic Study Group
- Confederate Stamp Alliance
- Cuban Philatelic Society of America
- Earth's Physical Features Study Unit
- Ebony Society of Philatelic Events & Reflections
- Egypt Study Circle
- Ephemera Society of America
- Ebony Society of Philatelic Events and Reflections
- Falkland Islands Philatelic Study Group

- Federación Interamericana de Filatelia (FIAF)
- Fédération Internationale de Philatélie
- Fellowship of Samoa Specialists
- France and Colonies Philatelic Society
- G.B. Overprints Society
- Germany Philatelic Society
- Graphics Philately Association
- Guyana Philatelic Society
- Haiti Philatelic Society
- Hong Kong Study Circle
- India Study Circle
- International Cuban Philatelic Society
- International Philippine Philatelic Society
- International Postal History Fellowship
- International Society for Japanese Philately
- International Society of Guatemala Collectors
- International Society of Worldwide Stamp Collectors
- Iran Philatelic Study Circle
- Le Club Philatelique Saint-Pierre et Miquelon
- Machine Cancel Society
- Meter Stamp Society
- Metropolitan Air Post Society
- Mexico Elmhurst Philatelic Society International
- Military Postal History Society
- National Duck Stamp Collectors Society
- Nepal & Tibet Philatelic Study Circle
- Nicaragua Study Group
- Old World Archaeology Study Group
- Ottoman and Near East Philatelic Society
- Pacific Islands Study Circle
- Papua Philatelic Society
- Perfins Club
- Peru Philatelic Study Circle
- Philatelic Foundation
- Philatelic Society for Greater Southern Africa
- Philatelic Specialists Society of Canada
- Pitcairn Islands Study Group
- Plate Number Coil Collectors Club
- Polonus Philatelic Society
- Post Mark Collectors Club
- Postal History Foundation
- Postal History Society
- Postal History Society of Canada
- Postal Label Study Group
- Postal Order Society
- Poster Stamp Collectors Club
- Precancel Stamp Society
- Puerto Rico Philatelic Society
- Rhodesian Study Circle
- Rocky Mountain Philatelic Library
- Rossica Society of Russian Philately
- Royal Philatelic Society of Canada

- Royal Philatelic Society London
- Sarawak Specialists Society
- Scandinavian Collectors Club
- Scouts on Stamps Society International
- Smithsonian National Postal Museum
- Society for Czechoslovak Philately
- Society for Hungarian Philately
- Society for Thai Philately
- Society of Australasian Specialists/Oceania
- Society of Indo-China Philatelists
- Society of Israel Philatelists
- Society of Postal Historians
- South African Collectors Society
- Space Unit
- Spanish Philatelic Society
- Spellman Museum of Stamps and Postal History
- Sports Philatelists International
- St. Helena, Ascension and Tristan da Cunha Philatelic Society
- St. Pierre & Miquelon Philatelic Society
- State Revenue Society
- The Petroleum Philatelic Society International
- U.S. Philatelic Classics Society
- U.S. Possessions Philatelic Society
- Ukrainian Philatelic and Numismatic Society
- United Nations Philatelists, Inc.
- United Postal Stationery Society
- United States Stamp Society
- Universal Ship Cancellation Society
- Vincent Graves Green Philatelic Research Foundation
- West Africa Study Circle
- Westfield Stamp Club
- Women Exhibitors
- Wreck & Crash Mail Society
- Zeppelin Study Group

## Exhibits & Awards Update



Grand Prix Nationale  
Donated by the APS  
Crystal bowl  
(Best US subject exhibit)



Grand Prix Internationale  
Donated by the FIP  
16" Cherry wood vase  
(Best Non-US subject exhibit)



Grand Prix d'Honneur  
Donated by Robert Odenweller  
Tiffany sterling silver tray  
(Best Championship Class exhibit)

The final list of accepted philatelic and literature exhibits is just about ready! While there will always be some last minute changes, here is what we have to date.

As of this point 697 philatelic exhibits have been accepted from 76 different countries from Argentina to Venezuela. It includes 18 Championship Class entries vying for the Grand Prix d'Honneur. For the first time First Day Cover exhibits will be represented internationally in a special display class with 8 entries. There are 4,118 frames among all competitive classes.

The literature competition features 165 entries from 45 countries. These represent a variety of works including handbooks, periodicals and catalogs.

In the very near future the complete list of the entries can be downloaded from our web site at [http://www.ny2016.org/SubMenu/About the Exhibition.aspx?id=494](http://www.ny2016.org/SubMenu/About_the_Exhibition.aspx?id=494).

## Dealers and Postal Administrations

More than 150 dealers from 22 different countries will be coming to WSS-NY 2016, as well as some 50 postal administrations either staffed by their own countrymen or agency representatives.

The complete roster with contact information is too long to be shown here, but find everything on our home page under "Bourse."

We encourage all show-goers to contact dealers in advance and describe the type of material you are looking for.



We are equally pleased to report that donors have been very generous in providing special prizes of all kinds to be awarded by the jury panel.

There are 64 such awards in addition to the three top prizes pictured here. Many of these can be found online at

[http://www.ny2016.org/SubMenu/Awards\\_Palmares.aspx?id=496](http://www.ny2016.org/SubMenu/Awards_Palmares.aspx?id=496).

## Auction Update



All auctions are taking place in Rooms 1E01-1E05 on Level 1 of the Javits Center, two levels below the show floor. Viewing and auction times are yet to be finalized.

- May 30 (M): Auktionshaus Christoph Gärtner GMBH & Co. - World Rarities  
<http://www.auktionen-gaertner.de/>
- May 31 (T): Robert A. Siegel Auction Galleries  
<http://www.SiegelAuctions.com>
- June 1 (W): Schuyler J. Rumsey Philatelic Auctions  
<http://www.rumseyauctions.com/>
- June 2 (Th): Daniel F. Kelleher Auctions, LLC.  
<http://db.kelleherauctions.com/>
- June 3 (F): The Global Philatelic Network Rarities Auction (H. R. Harmer in cooperation with Corinphila, Heinrich Köhler and John Bull)  
<https://www.heinrich-koehler.de/en/global-philatelic-network/>

Sun	Mon	Tue	Wed	Thu	Fri	Sat
MAY/JUNE 2016						28
29	30	31	1	2	3	4

## NPM Art Exhibit on Display



The Smithsonian Institution's National Postal Museum presents an exhibit at WSS-NY 2016 that the Washington, DC organization has featured since December.

"New York City: A Portrait through Stamp Art" brings the viewer into the world of stamp design using pieces from the museum's Postmaster General's Collection vast array of over 5,000 items. Six themes dealing with baseball, Broadway, city life, icons, music and politics will all be represented through the selected artwork as depicted above.

## Exhibition Catalog

The Exhibition Catalog for WSS-NY 2016 is now in production.

Intended as a quality keepsake that visitors and non-visitors alike will want to have in their philatelic libraries long after the show is over, it includes articles on New York-related philatelic subjects such as carrier and local stamps, the glory days of Nassau Street, stamps and cinderellas depicting New York themes, early air mail service out of N.Y., and a survey of the global stamp and security printing businesses that were based in the city – all richly illustrated in full color.

It will also include brief features on resources for philatelists such as the APS, APRL and Philatelic Foundation, a tribute to the Collectors Club, essays on the future of philately, highlights from the Court of Honor at the show, and of course a full listing of the competitive and invited exhibits on display.

The 6-by-9-inch paperback book is being edited by Matthew Healey and designed by Niko Courtelis. It runs about 300 pages and will be sold for \$10 at the show. Don't miss this delightful and comprehensive keepsake when you arrive at WSS!

Amos Press, the publisher of Linn's Stamp News and the Scott catalogues, is preparing a show preview/guide, which will include further details such as society meeting times and room numbers and a full listing of first-day stamp issues by the U.S. Postal Service and other postal administrations at the show.

That publication will be mailed to all Linn's subscribers in the weeks before the show, and will be available at the show for visitors who do not subscribe. Linn's is additionally publishing a special edition newspaper on three days during the show.

---

## Call for Volunteers at WSS-NY 2016

Preparations for World Stamp Show-New York 2016 are very advanced. This includes the recruitment of volunteers for the show. To date, more than 165 people have signed up. But more are needed. But more are needed... how about you?

Volunteers come from a wide range of backgrounds. Some are experts in their areas of philately, but most are intermediate or beginning collectors. Some are even non-collectors (typically spouses or other family members of collectors attending WSS-NY 2016).

But whatever your background, it is almost guaranteed that there is a volunteer position to match your talents and interests. These include Exhibit Mounters, Literature Room Librarians, Show Admission Specialists, Foreign Language Translators, and Information Booth Greeters. Overall, there are over 50 different types of volunteer positions.

Complete information on volunteering can be found on the WSS-NY2016 website, [http://www.ny2016.org/SubMenu/Become\\_a\\_Volunteer.aspx?id=528](http://www.ny2016.org/SubMenu/Become_a_Volunteer.aspx?id=528). There you can view the Directory of Volunteer Opportunities and the Volunteer Handbook. To sign-up, just click on the link to the Volunteer Application Form and fill in your name, contact info, any special skills or abilities you have,

and what positions you would be interested in. Then hit the submit button. The WSS-NY2016 Volunteer Committee will respond within a few days.

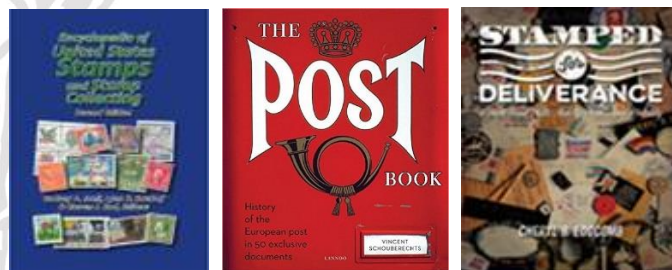


Mark Butterline  
Volunteer Chair  
[mark.butterline@ny2016.org](mailto:mark.butterline@ny2016.org)

---

## Book Releases

New book releases are an important part of every philatelic international show, and WSS-NY 2016 is no different. Visitors will have the opportunity to learn about them, meet their authors and purchase them during several scheduled events.



- **Encyclopedia of United States Stamps and Stamp Collecting, Second Edition**  
Produced by the United States Stamp Society and edited by Rodney A. Juell, Lynn R. Batdorf and Steven J Rod.  
(\$25 special price at the show, \$40 afterwards)  
This book will educate, entertain, and inspire a U.S. philatelist, whether a beginner or specialist.
- **The Post Book: The History of the European Post in 50 Exclusive Documents** by Vincent Schouberechts (\$40 on Amazon)  
A history of the Post starting with the business formed by the Thurn & Taxis family and the birth of the English post.
- **Stamped for Deliverance** by Cheryl Edgcomb  
Autobiography by the youth philately advocate describing her family and stamp adventures, including the founding and activities of Stamp Camp USA.  
(\$25)

## Collectors Club Offers Tours



The Collectors Club, host stamp club of WSS-NY 2016, is opening its doors and offering visitors the opportunity to check out their facility at 22 East 35th Street on Thursday, June 2, at 10 AM, 2 PM or 6 PM.

The one hour tours will focus on the historical and architectural importance of this 1853 house renovated by Stanford White in 1901 and bought by the Collectors Club in the depths of the depression. A brief history of the Club will also be given.

Complimentary timed tickets for the tours are required and may be obtained at no charge on a first-come, first-served basis at the Collectors Club booth on the show floor.

## Other Events Around Town



### Mets Baseball Home Schedule

- Friday, 05/27- 7:10 PM vs. LA Dodgers (shirt night)
- Saturday, 05/28- 7:15 PM vs. LA Dodgers
- Sunday, 05/29- 1:10 PM vs. LA Dodgers
- Monday, 05/30- 1:10 PM vs. Chicago White Sox
- Tuesday, 05/31- 7:10 PM vs. Chicago White Sox
- Wednesday, 06/01- 1:10 PM vs. Chicago White Sox



### Carnegie Hall

- Saturday, 05/28- 8:00 PM Distinguished Concerts International New York
- Sunday, 05/29- 8:30 PM Distinguished Concerts International New York
- Friday, 06/03- 8:00 PM New York Concerti Sinfonietta, Weill Recital Hall

### Lincoln Center

- Saturday, 05/28- 2:00 PM and 8:00 PM New York Philharmonic: Holst's-The Planets, Avery Fisher Hall
- Thursday, Friday and Saturday, June 2-4- 7:30/8:00 PM New York Philharmonic: Vivaldi- The Four Seasons, David Geffen Hall

### Hit Musicals Currently on Broadway

An American in Paris	The Book of Mormon
Chicago	Fiddler on the Roof
Hamilton	Jersey Boys
The King and I	Kinky Boots
Les Miserables	The Lion King
The Phantom of the Opera	Wicked

### Other

- Billy Joel in Concert- Friday, May 27, Madison Square Garden, 8:00 PM
- Washington Square Outdoor Art Exhibit Spring Show- May 28-30
- Selena Gomez Revival World Tour- Wednesday, June 1- Barclay's Center, Brooklyn; Thursday, June 2, Prudential Center, Newark, NJ

## Exhibition Floor Plan

The current show layout, subject to last minute revisions, can be seen on page 10.



## Post-Show Frame Availability

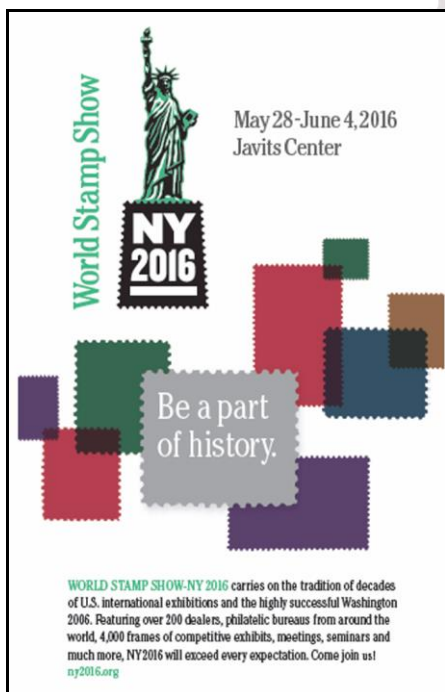


Our exhibit frames will be sold after the show. A prototype of this durable but ultra-light A-frame design was on display at StampShow 2015.

To be added to the list to receive pricing information, please email Christine Jimenez, WSS-NY 2016 Executive Assistant, at [christine.jimenez@ny2016.org](mailto:christine.jimenez@ny2016.org) or phone 844-977-2016.

## Some of our Recent Ads

(see more at [http://www.ny2016.org/SubMenu/Graphics\\_Ads.aspx?id=489](http://www.ny2016.org/SubMenu/Graphics_Ads.aspx?id=489))



## Social Media Links

- <http://www.facebook.com/ny2016>
- <https://twitter.com/WorldStampShowN>
- <http://www.pinterest.com/wssny2016/new-york-stamps/>
- [http://en.wikipedia.org/wiki/World\\_Stamp\\_Show-NY\\_2016](http://en.wikipedia.org/wiki/World_Stamp_Show-NY_2016)

# World Stamp Show New York 2016

May 28 - June 4

Jacob Javits Convention Center, Halls 3B, 3D, 3E

● Columns

□ Ceiling height is 14' in this area (compared to 33' in other areas of hall) ■ Dealer Booths ■ Society Booths ■ Postal Administrations



The Opening Ceremony will be held in the Special Events Hall on Level 1.

All meetings take place in Level 1 Hall E in the breakout rooms 06-21.

The US Postal Service and UN Postal Administration first day ceremonies all take place in Level 1 rooms 1E12-14.

Auctions take place Monday through Friday in Level 1 rooms 1E01-05.





## Hotels

**Courtyard New York Manhattan 5th Avenue**  
3 E 40th St  
(bet 5th and Madison Aves) \$269 ..... 01

**Element New York Times Square West**  
311 W 39th St  
(bet 8th and 9th Aves) \$219 ..... 02

**Fairfield Inn & Suites Times Square**  
330 W 40th St  
(bet 8th and 9th Aves) \$289 ..... 03

**Four Points by Sheraton Midtown Times Square**  
326 W 40th St  
(bet 8th and 9th Aves) \$279 ..... 03

**Holiday Inn Express Manhattan West**  
538 W 48th St  
(bet 10th and 11th Aves) \$239 ..... 04

**Hudson Hotel**  
356 W 58th St  
(bet 8th and 9th Aves) \$209 ..... 05

**JW Marriott Essex House Hotel**  
160 Central Park South  
(bet 6th and 7th Aves) \$339 ..... 06

**Millennium Broadway Hotel**  
145 W 44th St  
(bet 6th and 7th Aves) \$249 ..... 07

**\*New York Marriott Marquis (headquarters)**  
1535 Broadway at 46th St  
(bet 46th and 45th Sts) \$279 ..... 08

**Quality Inn Midtown West**  
442 W 36th St  
(bet 9th and 10th Aves) \$239 ..... 09

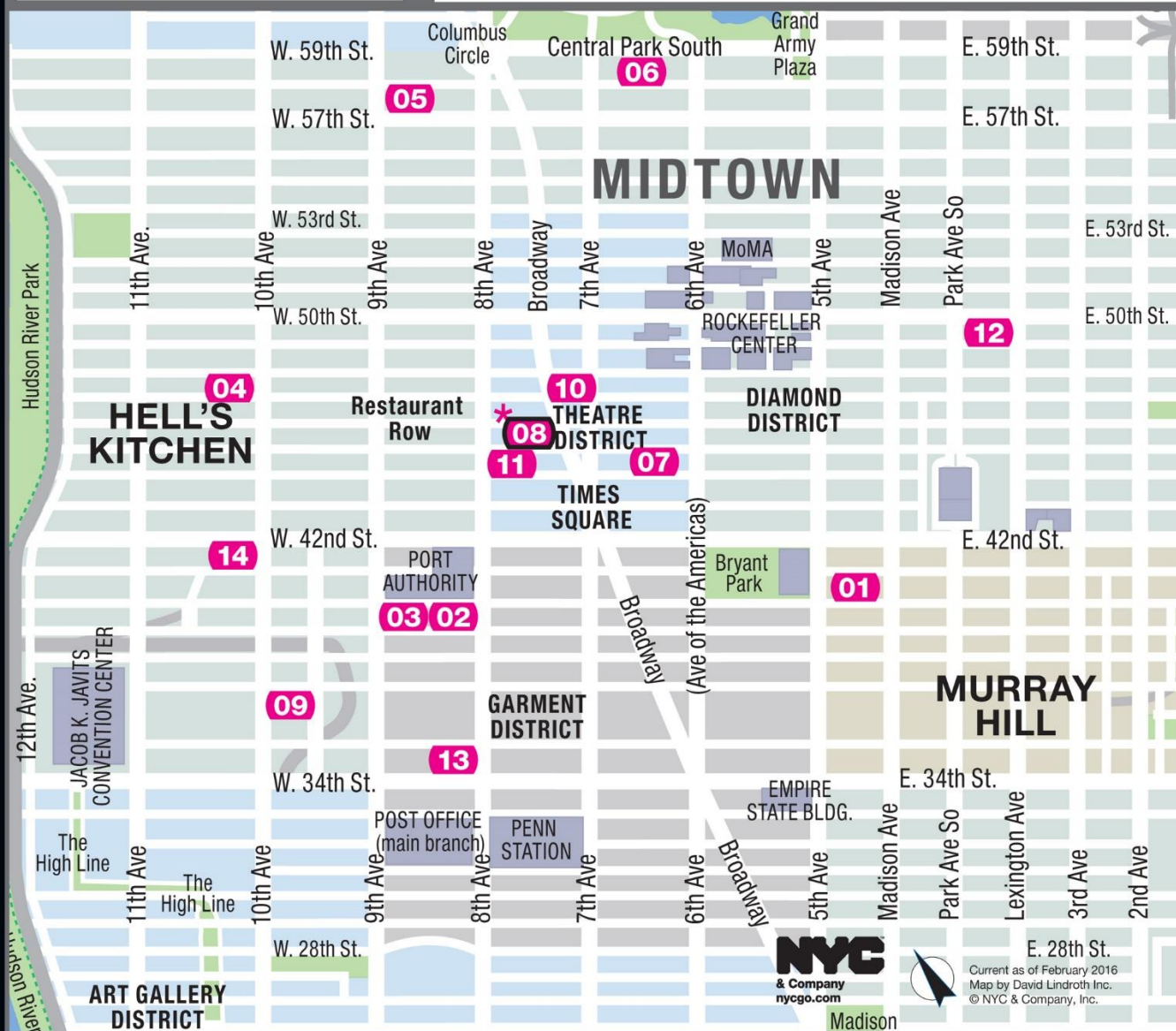
**Renaissance Times Square**  
714 7th Ave  
(bet 48th and 47th Sts) \$289 ..... 10

**Row NYC**  
700 8th Ave  
(bet 45th and 44th Sts) \$219 ..... 11

**The Waldorf Astoria**  
301 Park Ave  
(bet 50th and 49th Sts) \$359 ..... 12

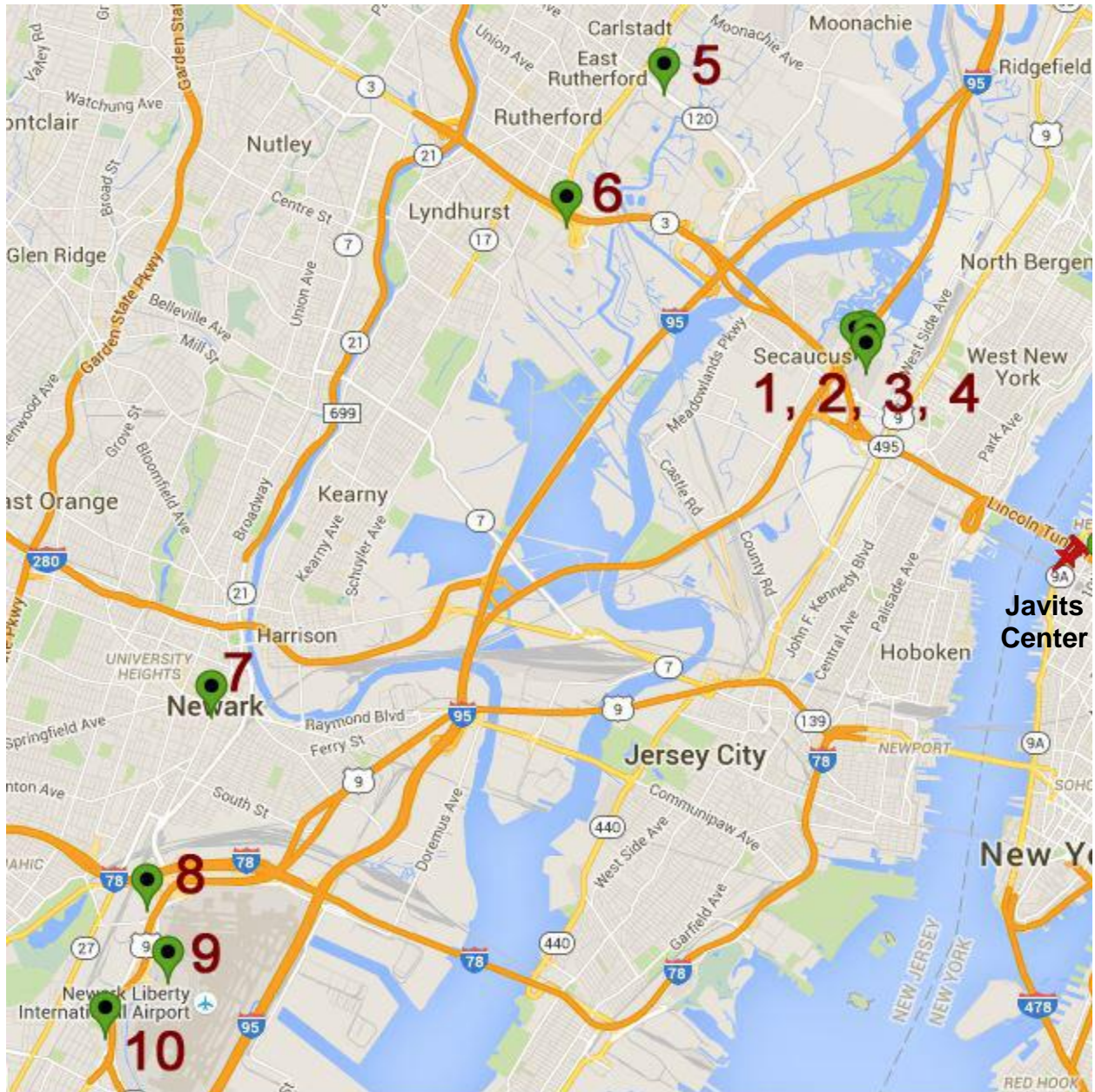
**Wyndham New Yorker Hotel**  
481 8th Ave  
(bet 35th and 34th Sts) \$239 ..... 13

**YOTEL New York**  
570 10th Ave  
(bet 42nd and 41st Sts) \$219 ..... 14





# New Jersey Hotels



(prices are nightly for double beds)

1. **Holiday Inn Secaucus** 300 Plaza Drive **\$159** 3.0 miles away
2. **Meadowlands River Inn** 250 Harmon Meadow Blvd **\$159** 3.2 miles
3. **Courtyard Secaucus Meadowlands** 455 Harmon Meadow Blvd **\$159** 3.1 miles
4. **Embassy Suites Secaucus Meadowlands** 455 Plaza Drive **\$189** 5.4 miles
5. **Fairfield Inn East Rutherford** 850 Patterson Plank Road **\$139** 9.2 miles
6. **Quality Inn Meadowlands** 10 Polito Ave **\$129** 9.0 miles
7. **Courtyard Newark Downtown** 858 Broad Street **\$139** 13.4 miles
8. **Wyndham Garden Newark** 550 US Hwy 1 South **\$109** 19.5 miles
9. **Newark Liberty Intl Airport Marriott** 1 Hotel Road **\$154** 19.6 miles
10. **Renaissance Newark Airport Hotel** 1000 Spring Street **\$144** 19.7 miles